

REGENCY LAKE ESTATES

A PLANNED UNIT DEVELOPMENT

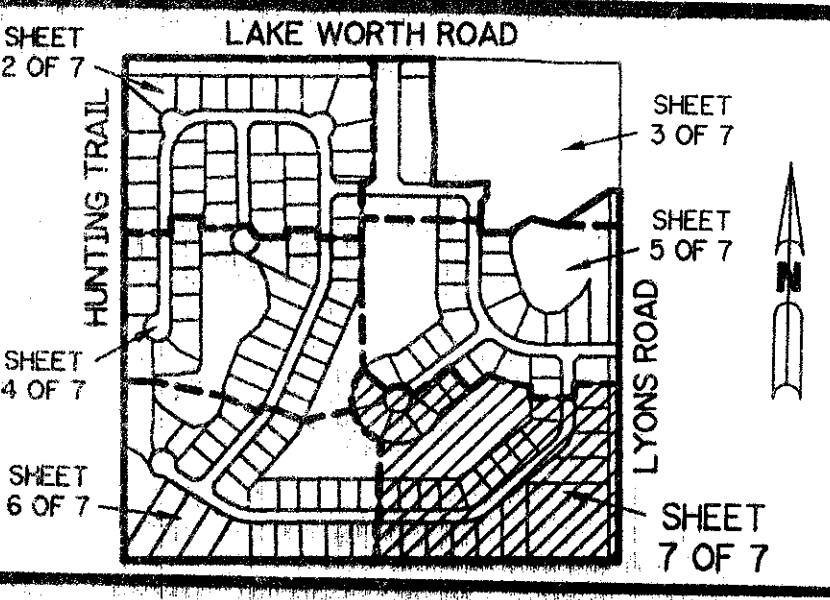
0638-001

106

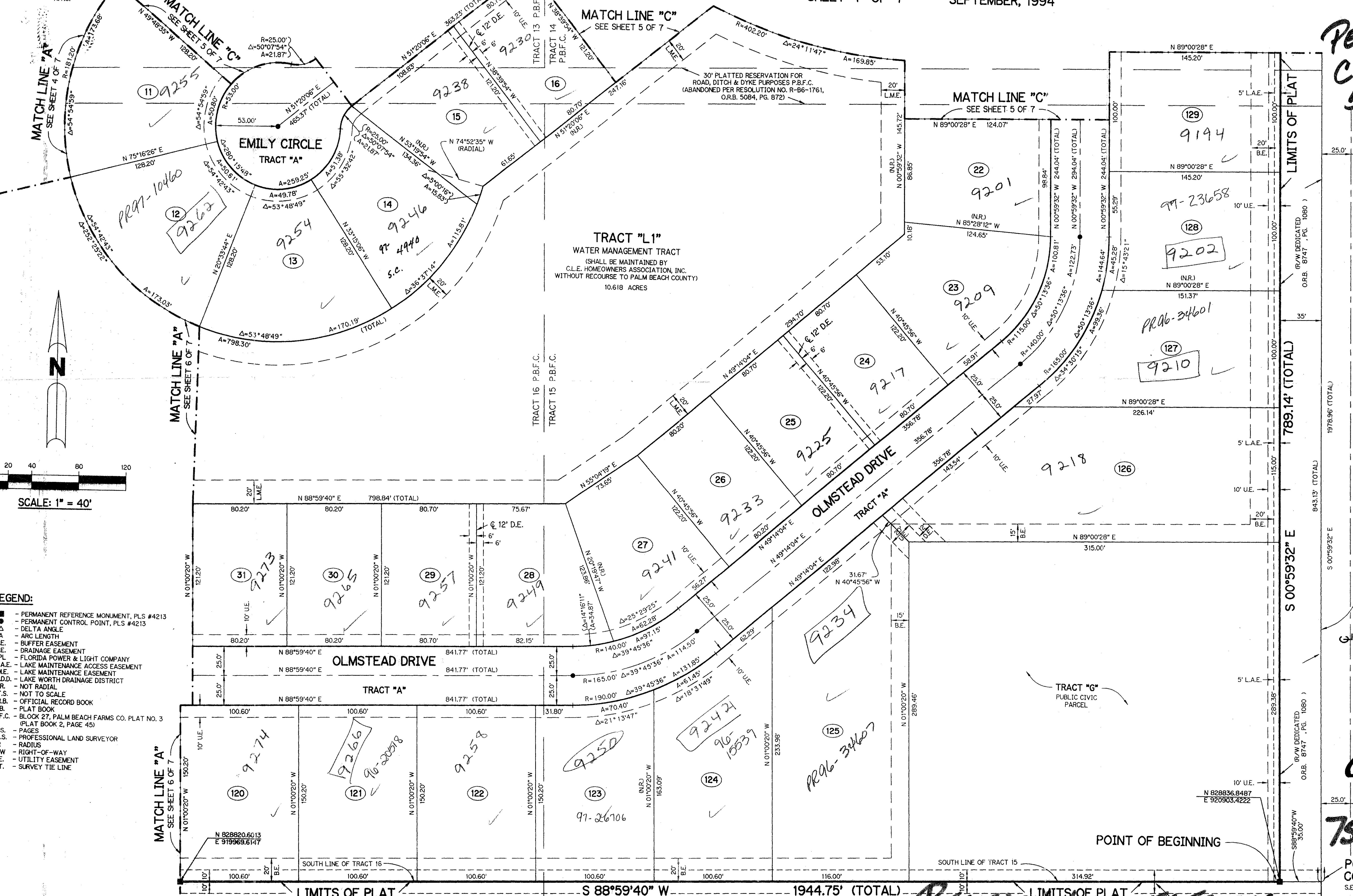
BEING A REPLAT OF A PORTION OF TRACTS 1, 2, 3, 12, 13, 14, 15, 16, AND 17 AND ASSOCIATED ABANDONED RIGHT-OF-WAY ALL IN BLOCK 27 ACCORDING TO THE PLAT OF PALM BEACH FARMS CO. PLAT NO. 3, AS RECORDED IN PLAT BOOK 2, PAGE 45, PUBLIC RECORDS OF PALM BEACH COUNTY, FLORIDA, LYING IN SECTION 30, TOWNSHIP 44 SOUTH, RANGE 42 EAST.

SHEET 7 OF 7 SEPTEMBER, 1994

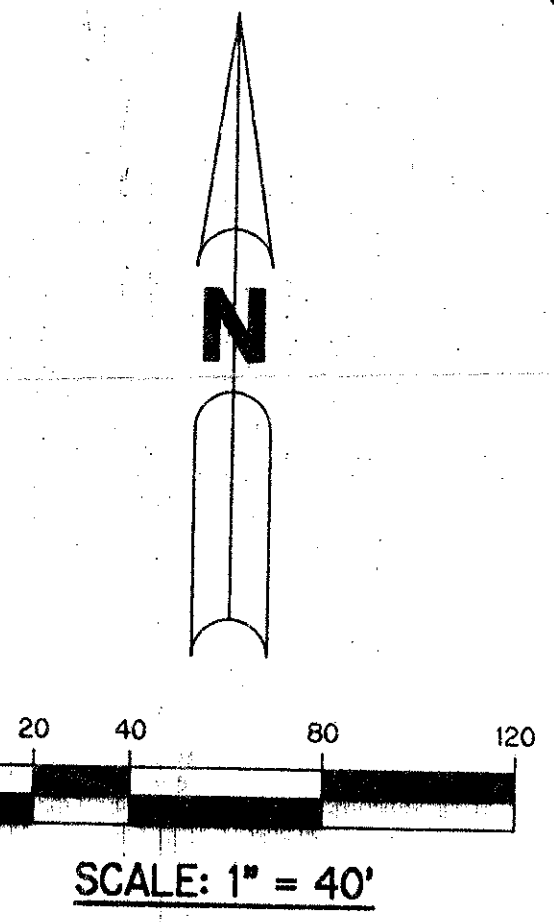
THIS INSTRUMENT PREPARED BY
 PERRY C. WHITE P.L.S. 4213 STATE OF FLORIDA
 LAWSON, NOBLE AND ASSOCIATES, INC.
 ENGINEERS PLANNERS SURVEYORS
 WEST PALM BEACH, FLORIDA



KEY MAP
 N.T.S.



PET. 94-4
 CURRENT
 5/2/2/I



- LEGEND:**
- PERMANENT REFERENCE MONUMENT, P.L.S. #4213
 - PERMANENT CONTROL POINT, P.L.S. #4213
 - △ DELTA ANGLE
 - A ARC LENGTH
 - B.E. BUFFER EASEMENT
 - D.E. DRAINAGE EASEMENT
 - F.P. FLORIDA POWER & LIGHT COMPANY
 - L.M.A.E. LAKE MAINTENANCE ACCESS EASEMENT
 - L.M.E. LAKE MAINTENANCE EASEMENT
 - L.W.D.D. LAKE WORTH DRAINAGE DISTRICT
 - NR. NOT RADIAL
 - N.T.S. NOT TO SCALE
 - O.R.B. OFFICIAL RECORD BOOK
 - P.B. PLAT BOOK
 - P.B.F.C. BLOCK 27, PALM BEACH FARMS CO. PLAT NO. 3 (PLAT BOOK 2, PAGE 45)
 - POS. PAGES
 - P.L.S. PROFESSIONAL LAND SURVEYOR
 - R. RADIUS
 - R/W. RIGHT-OF-WAY
 - U.E. UTILITY EASEMENT
 - S.T. SURVEY TIE LINE

SUBDIVISION: Regency Lake Estates
 BOOK 75 PAGE 106
 FLOOD ZONE B FLOOD MAP # 170A
 QUAD # 48 ZONING PUD
 SE 94-04 ZIP CODE 33467
 PUD NAME 35/4/42

TAR-738

P.B.F.C. CO.
 PLAT No. 3

OVERALL
 KENT PUD

0638-001

75/106

POINT OF COMMENCEMENT
 S.E. CORNER OF TRACT 15, P.B.F.C.